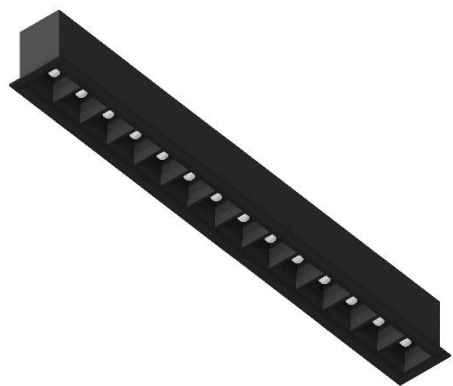


Revit Family Information
ED VECTOR+ (DO) RECESSED



Manufacturer: 2007-2022 © Edison Lighting Group

File Name: Lighting-Recessed-Edison-Ed_Vector+ (DO).rfa

Family Category: Lighting Fixtures

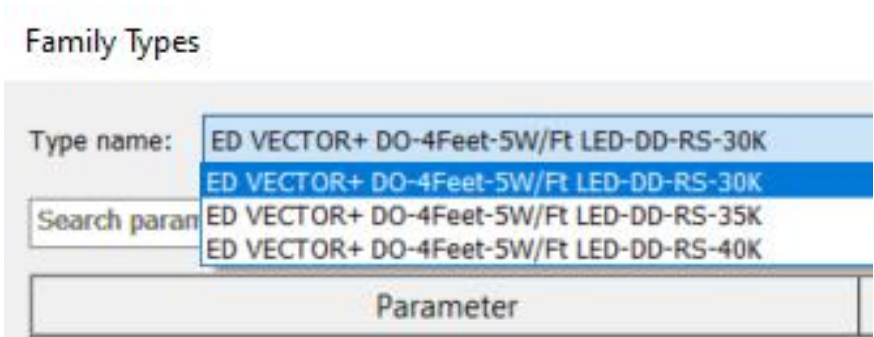
Software: Revit 2020

IES: Available

Host: Face *

* Face based (as opposed to ceiling or wall based) components can be recognized in both architectural and engineering Revit project files


Pre-loaded Types**:



** Type name based on Specification Sheet

Adjustable Parameters:

Properties ✕



Lighting-Recessed-Edison-Ed_Vector+ (DO)
ED VECTOR+ DO-4Feet-5W/Ft LED-DD-RS-30K

Lighting Fixtures (1) ⌵ 🔧 Edit Type

Constraints ⬆ ⬆

Size	4' 0"
Schedule Level	Level 1
Elevation from Level	10' 0"
Host	Compound Ceiling : Plain

Construction ⬆ ⬆

Recessed	<input type="checkbox"/>
Recessed T-Bar	<input checked="" type="checkbox"/>